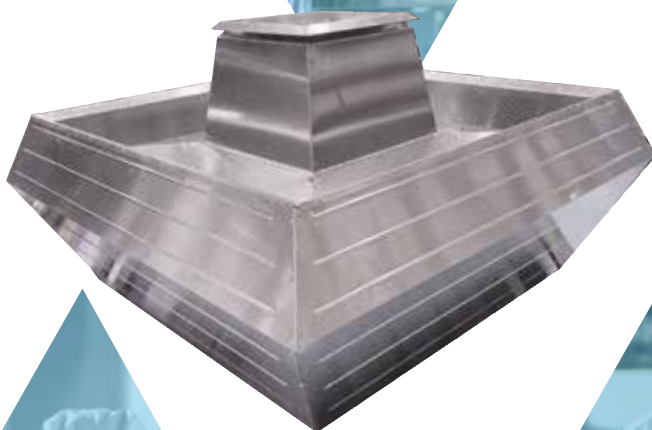


AIRTREND Limited
Predstavništvo u Beogradu
Kumanovska 14
11000 Beograd, Srbija
Tel: 011 3836886, 3085740
Faks: 011 3444113
e-mail: gobrid@eunet.rs
web: www.airtrend.rs



ROOF UNITS

eVertical (eDVC) Kitchen extract roof unit





eVertical (sDVC)

Kitchen extract roof unit

CONTENTS

Overview	3
Product Technical Information	4-15
Accessories	16-17

OVERVIEW

PRODUCT FACTS

- Kitchen Extract Roof fan
- Motor out of airstream 120°C
- All plastic components and cables are UV-resistant
- Offer with a space saving and sound absorbing casing
- Extremely low noise levels
- Vertical discharge
- 355 - 560 - Integral inverter
- 630 - 900 - Loose inverter
- 1ph and 3ph options

ELECTRICAL SUPPLY

230V/50Hz/1Ph & 400V/50Hz/3Ph

TEMPERATURE RANGE

up to 120°C

SIZES

355, 400, 450, 500, 560, 630, 710, 800 & 900 mm

CONSTRUCTION

eVertical DVC roof fans are suitable for mounting on flat & pitch roofs (additional mounting ancillary required). Side panels of vertical discharge and motor hood made of water corrosive resistant aluminium. The duct is perfectly protected against water penetration by inlet nozzle incorporated in the base frame.

MOTOR

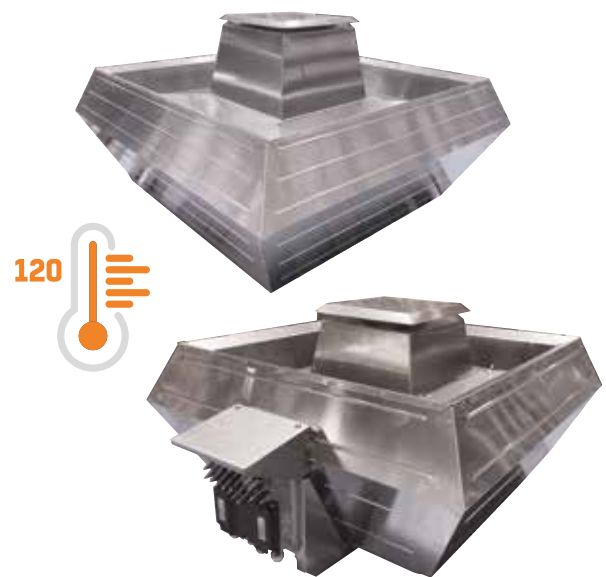
The IEC motor is out of airstream. The motor includes a plastic coated round steel bird guard.

INSTALLATION

The factory-made mounting screws guarantee an easy and uncomplicated installation of the accessory at the fan.

APPLICATIONS

eVertical DVC roof units are suitable for the ventilation of kitchens, garages, office buildings, residential buildings, nursing homes, skyscrapers, hotels, toilets, baths and much more.



PRODUCT CODE

eVertical DVC 355/4/1

- eVertical DVC - product name
- 355 - impeller dia
- 4 - 4-pole
- 1 - 1 ph

ACCESSORIES



Base for sloping roof



Safety switch



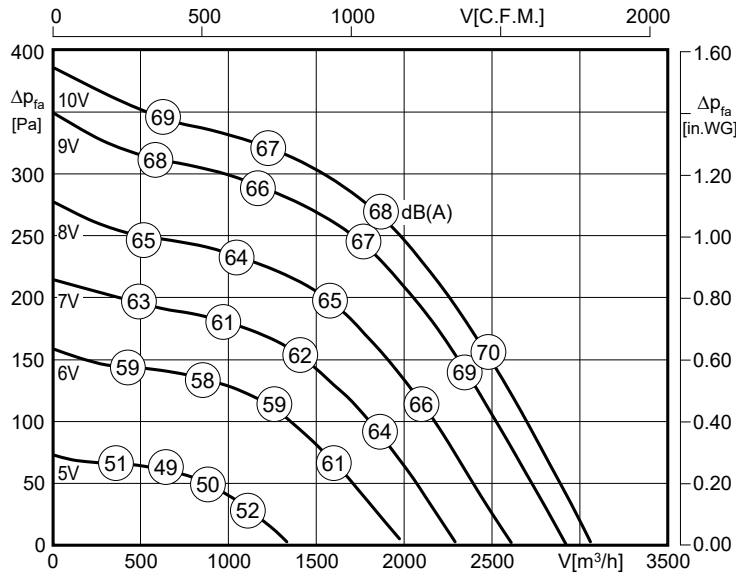
Vertical discharge socket



Inverter



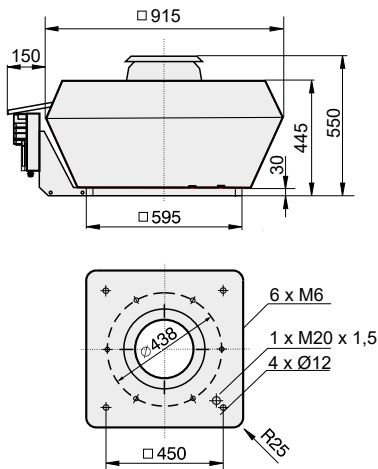
Performance chart



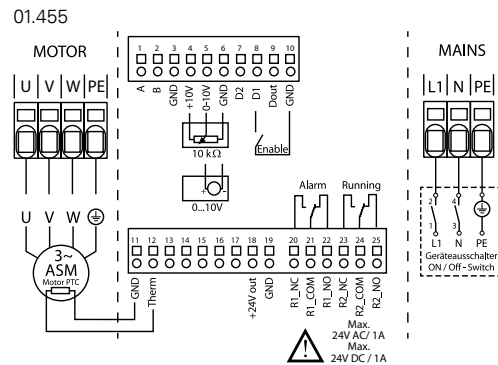
Product & Electrical details

Fan Description	Part Number	Temperature (°C)	kW	Speed (rpm)	FLC (A)	SC (A)	Phase	Voltage	Breakout Sound Level dB(A) @ 3m	Fan Weight (Kg)	IP Class
eVertical DVC 355/4/1	RC355403	120	0.32	1410	1.45	7.54	1	230	Inlet / Outlet 50 / 46	43	IP55

Drawings and Dimensions

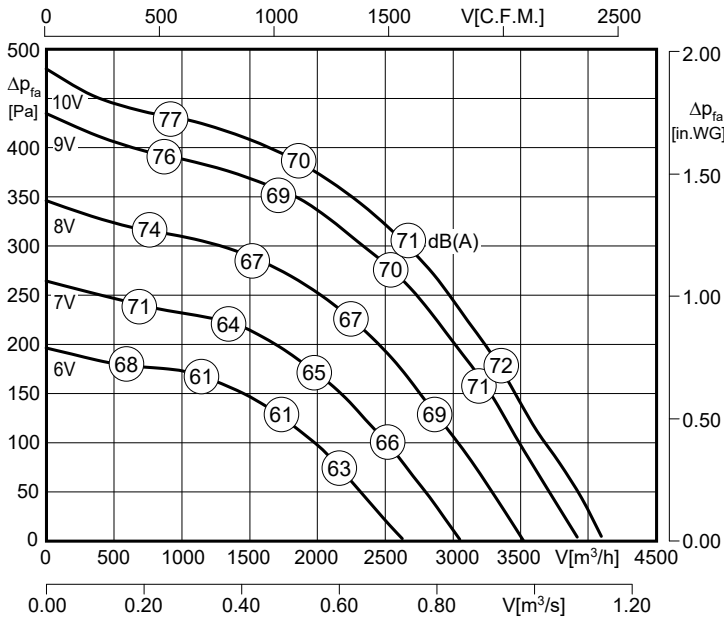


Wiring Diagrams



*Inverter drive included and fitted as standard

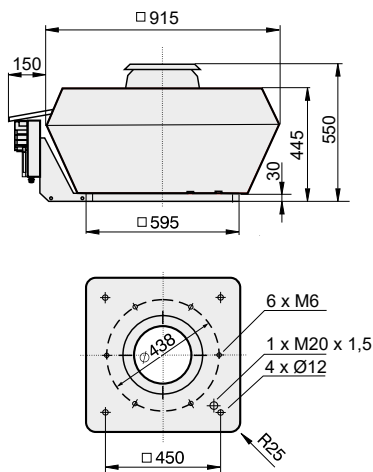
Performance chart



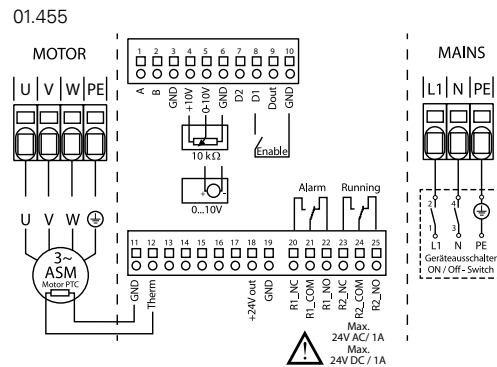
Product & Electrical details

Fan Description	Part Number	Temperature (°C)	kW	Speed (rpm)	FLC (A)	SC (A)	Phase	Voltage	Breakout Sound Level dB(A) @ 3m	Fan Weight (Kg)	IP Class
eVertical DVC 400/4/1	RC400403	120	0.53	1405	2.32	12.06	1	230	Inlet / Outlet 51 / 49	48	IP55

Drawings and Dimensions

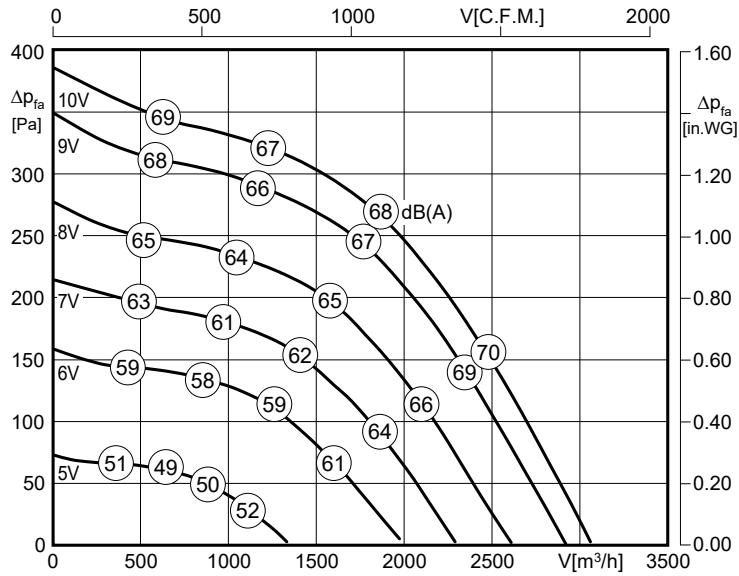


Wiring Diagrams



*Inverter drive included and fitted as standard

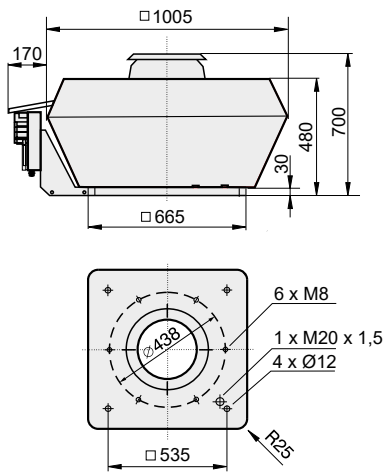
Performance chart



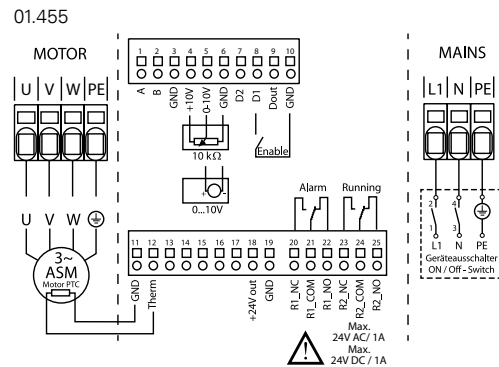
Product & Electrical details

Fan Description	Part Number	Temperature (°C)	kW	Speed (rpm)	FLC (A)	SC (A)	Phase	Voltage	Breakout Sound Level dB(A) @ 3m	Fan Weight (Kg)	IP Class
									Inlet / Outlet		
eVertical DVC 450/4/1	RC450403	120	0.95	1395	4.12	26.78	1	230	59 / 44	60.5	IP55

Drawings and Dimensions

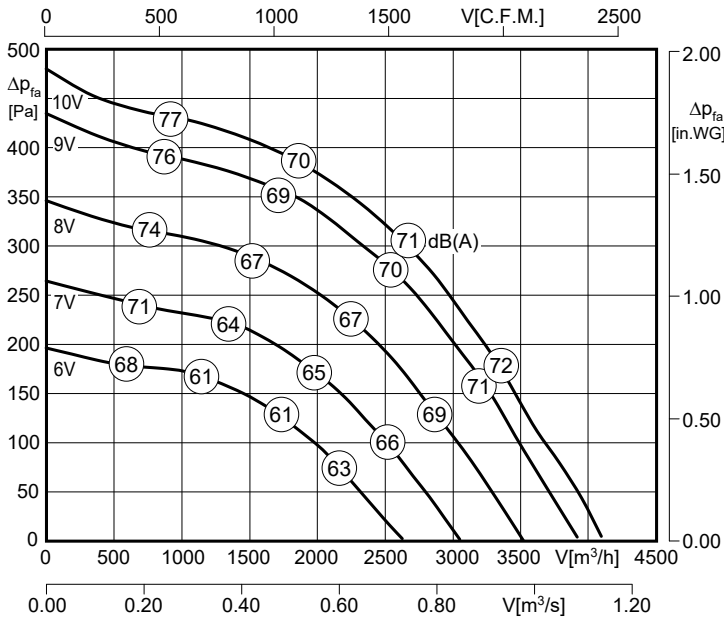


Wiring Diagrams



*Inverter drive included and fitted as standard

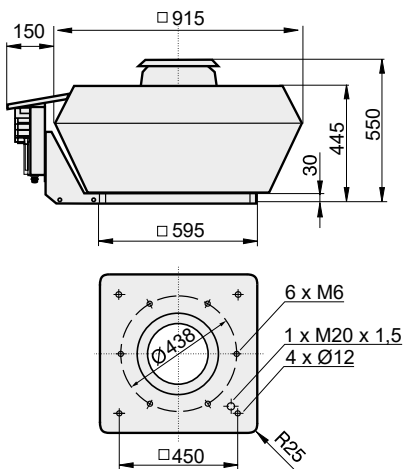
Performance chart



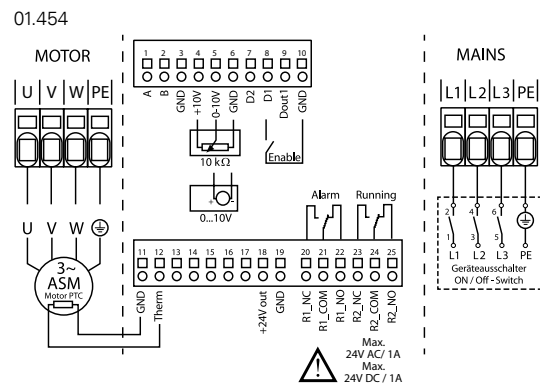
Product & Electrical details

Fan Description	Part Number	Temperature (°C)	kW	Speed (rpm)	FLC (A)	SC (A)	Phase	Voltage	Breakout Sound Level dB(A) @ 3m	Fan Weight (Kg)	IP Class
eVertical DVC 355/4/3	RC355402	120	0.31	1410	0.59	3.06	3	400	Inlet / Outlet 50 / 46	40	IP55

Drawings and Dimensions

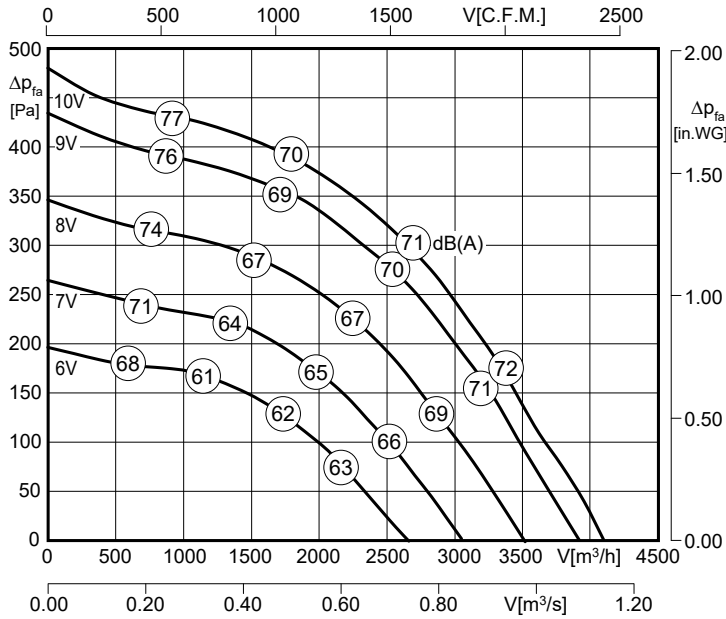


Wiring Diagrams



*Inverter drive included and fitted as standard

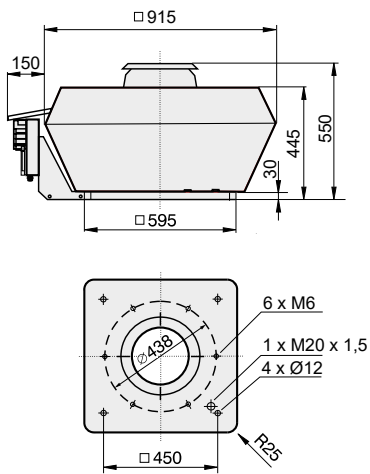
Performance chart



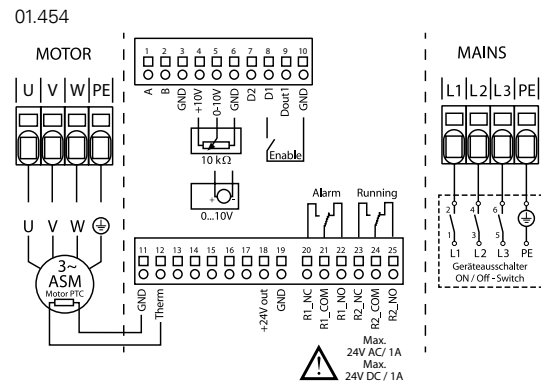
Product & Electrical details

Fan Description	Part Number	Temperature (°C)	kW	Speed (rpm)	FLC (A)	SC (A)	Phase	Voltage	Breakout Sound Level dB(A) @ 3m	Fan Weight (Kg)	IP Class
eVertical DVC 400/4/3	RC400402	120	0.53	1410	0.89	4.62	3	400	Inlet / Outlet	48	IP55

Drawings and Dimensions

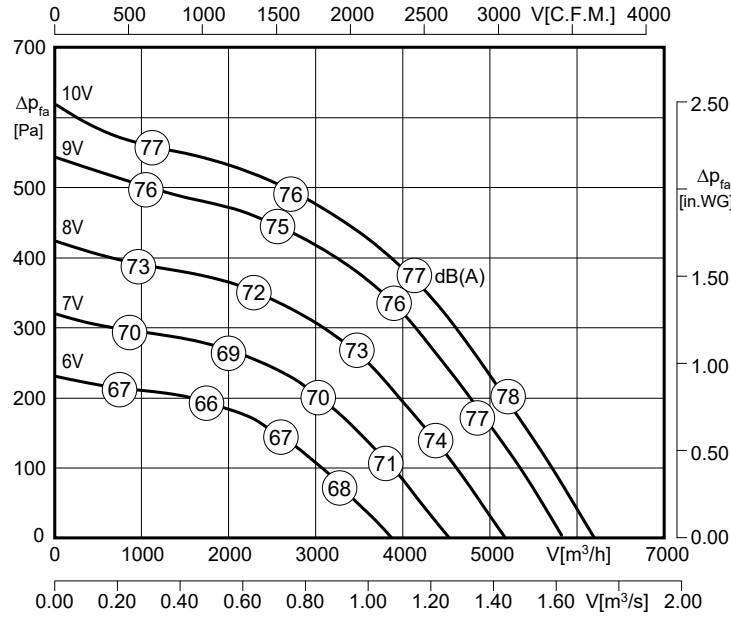


Wiring Diagrams



*Inverter drive included and fitted as standard

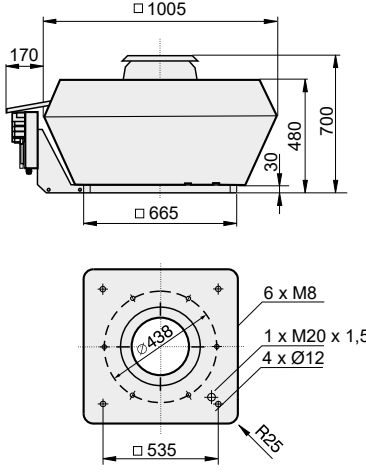
Performance chart



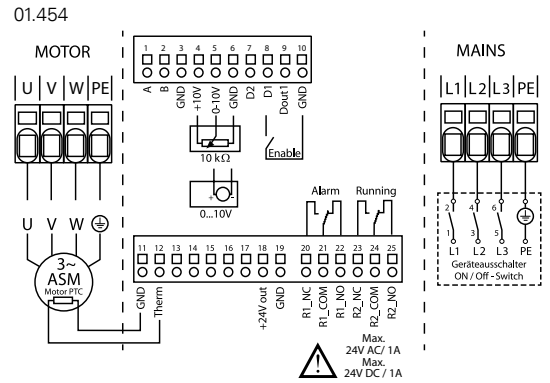
Product & Electrical details

Fan Description	Part Number	Temperature (°C)	kW	Speed (rpm)	FLC (A)	SC (A)	Phase	Voltage	Breakout Sound Level dB(A) @ 3m	Fan Weight (Kg)	IP Class
									Inlet / Outlet		
eVertical DVC 450/4/3	RC450402	120	0.93	1405	1.81	11.76	3	400	59 / 55	60.5	IP55

Drawings and Dimensions

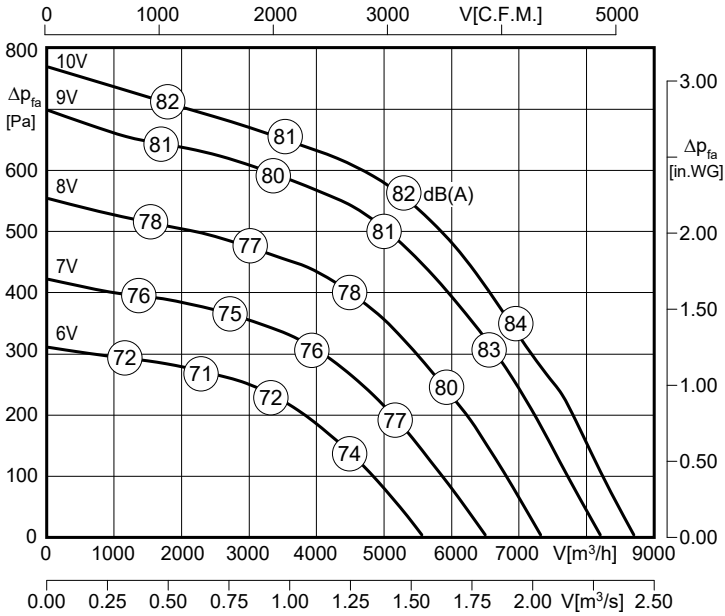


Wiring Diagrams



*Inverter drive included and fitted as standard

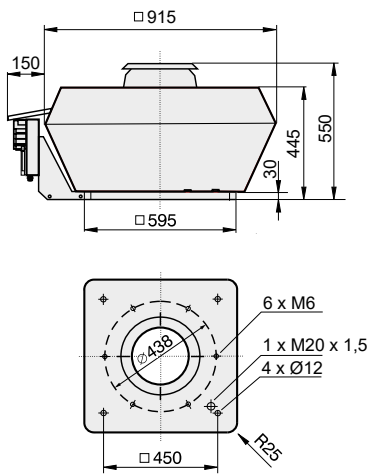
Performance chart



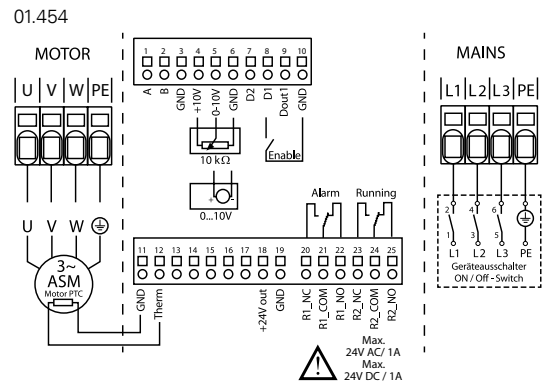
Product & Electrical details

Fan Description	Part Number	Temperature (°C)	kW	Speed (rpm)	FLC (A)	SC (A)	Phase	Voltage	Breakout Sound Level dB(A) @ 3m	Fan Weight (Kg)	IP Class
eVertical DVC 500/4/3	RC500401	120	1.7	1440	2.6	17.94	3	400	Inlet / Outlet	67.5	IP55

Drawings and Dimensions

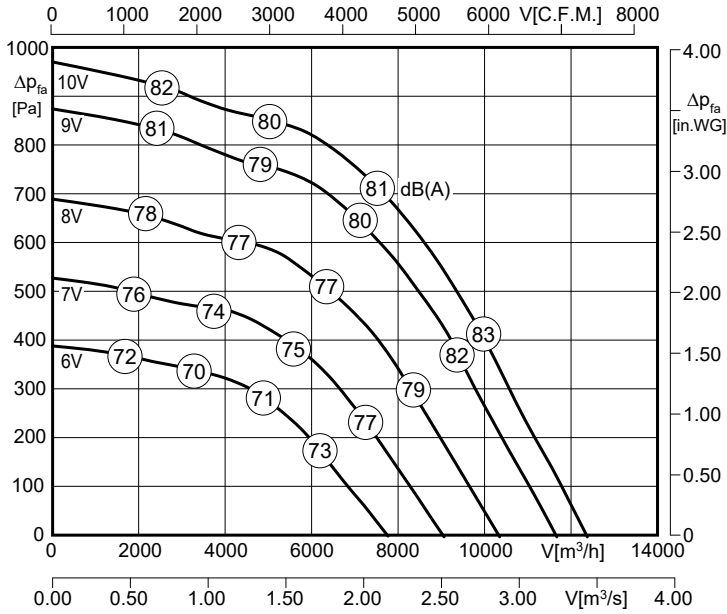


Wiring Diagrams



*Inverter drive included and fitted as standard

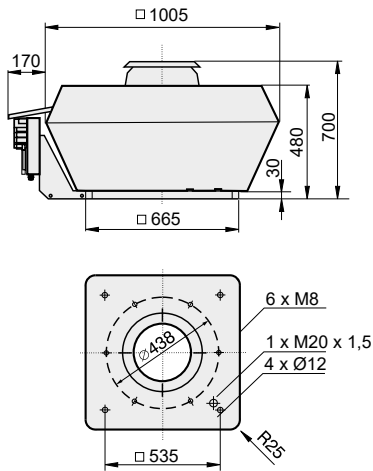
Performance chart



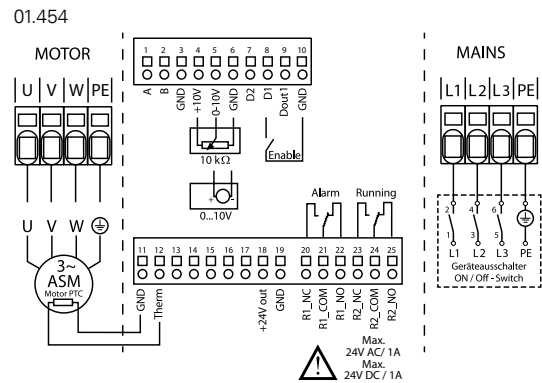
Product & Electrical details

Fan Description	Part Number	Temperature (°C)	kW	Speed (rpm)	FLC (A)	SC (A)	Phase	Voltage	Breakout Sound Level dB(A) @ 3m	Fan Weight (Kg)	IP Class
eVertical DVC 560/4/3	RC560401	120	2.95	1405	4.75	36.1	3	400	Inlet / Outlet	124	IP55

Drawings and Dimensions

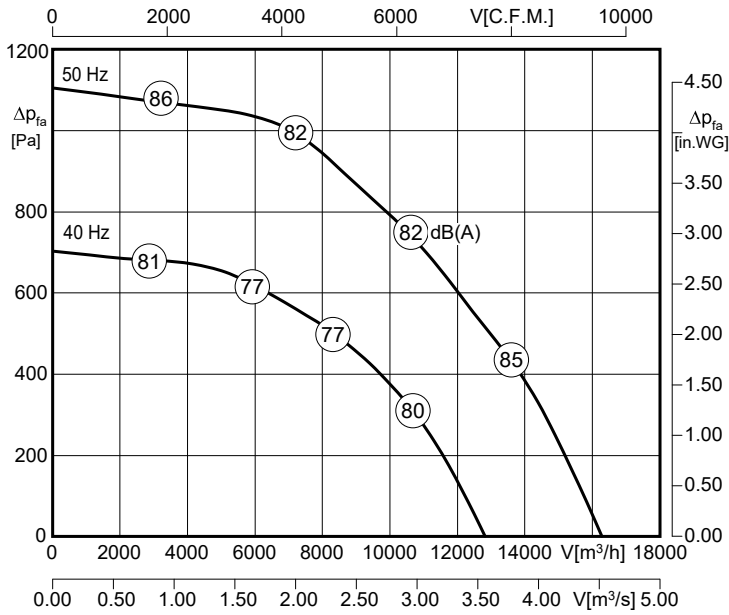


Wiring Diagrams



*Inverter drive included and fitted as standard

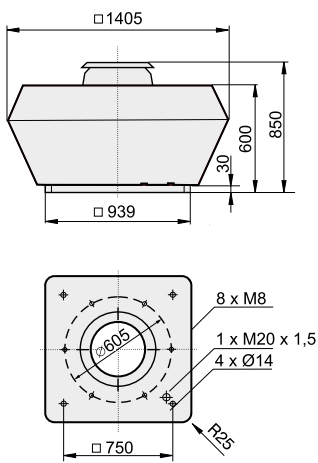
Performance chart



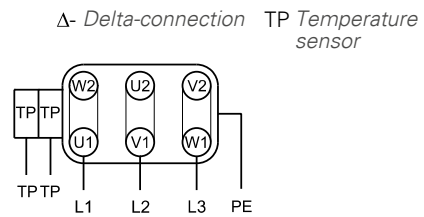
Product & Electrical details

Fan Description	Part Number	Temperature (°C)	kW	Speed (rpm)	FLC (A)	SC (A)	Phase	Voltage	Breakout Sound Level dB(A) @ 3m	Fan Weight (Kg)	IP Class
									Inlet / Outlet		
eVertical DVC 630/4/3	RC630410	120	6.4	1460	11.1	83.25	3	400	62 / 60	113	IP55

Drawings and Dimensions



Wiring Diagrams



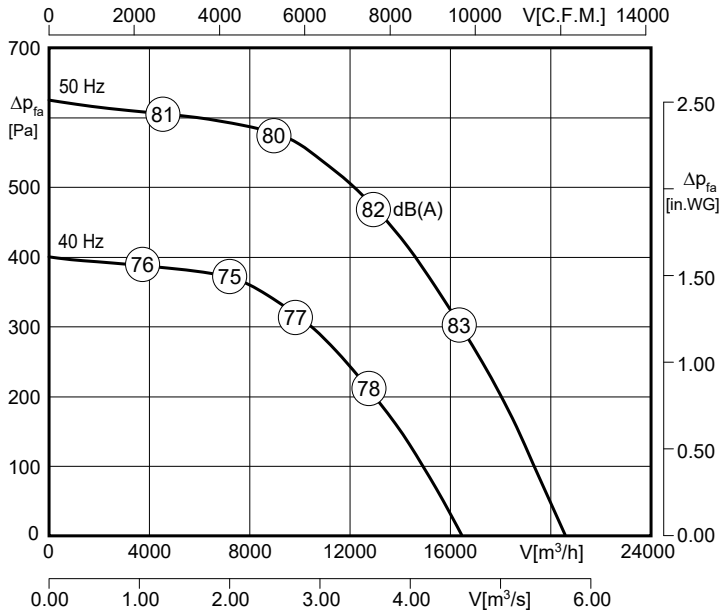
Inverter details

Part Number	Description
EA901021	IDDXF54 12.0



*Inverter drive included and fitted as standard

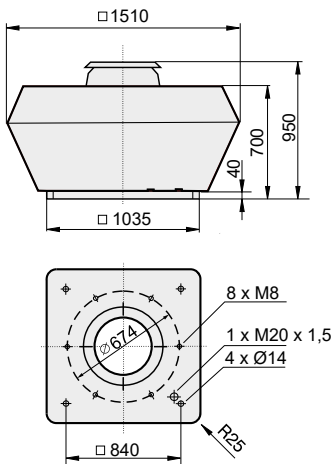
Performance chart



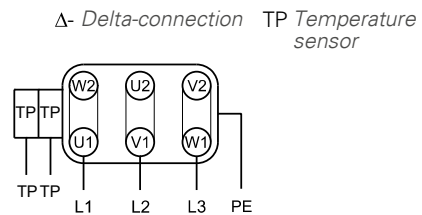
Product & Electrical details

Fan Description	Part Number	Temperature (°C)	kW	Speed (rpm)	FLC (A)	SC (A)	Phase	Voltage	Breakout Sound Level dB(A) @ 3m	Fan Weight (Kg)	IP Class
									Inlet / Outlet		
eVertical DVC 710/6/3	RC710613	120	3.4	968	9.4	55.46	3	400	64 / 60	160	IP55

Drawings and Dimensions



Wiring Diagrams



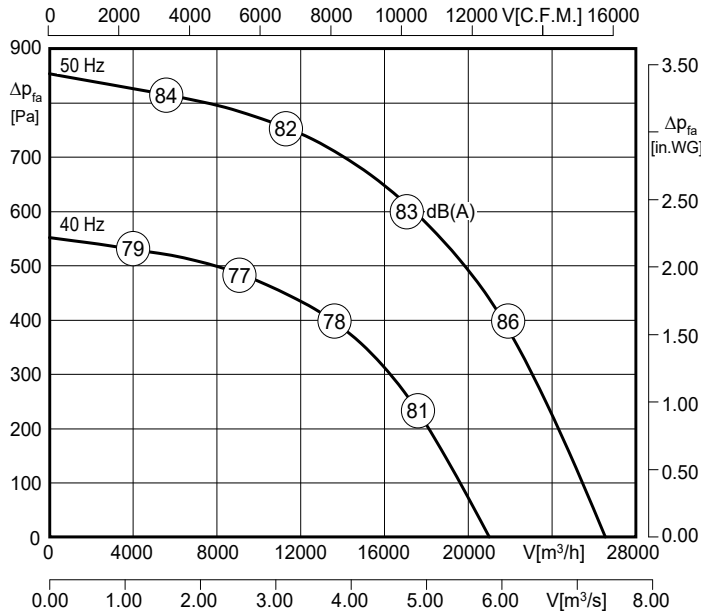
Inverter details

Part Number	Description
EA901021	IDDXF54 12.0



*Inverter drive included and fitted as standard

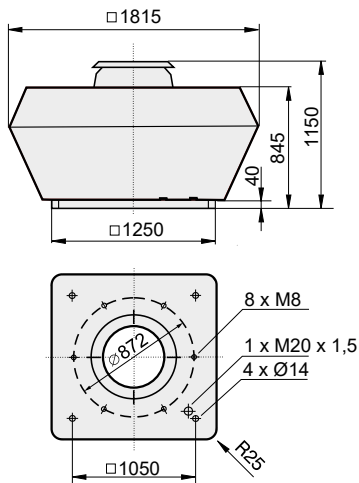
Performance chart



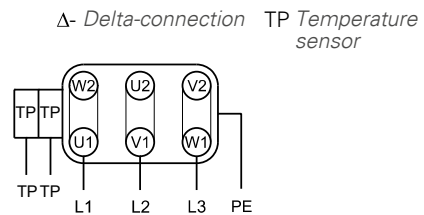
Product & Electrical details

Fan Description	Part Number	Temperature (°C)	kW	Speed (rpm)	FLC (A)	SC (A)	Phase	Voltage	Breakout Sound Level dB(A) @ 3m	Fan Weight (Kg)	IP Class
									Inlet / Outlet		
eVertical DVC 800/6/3	RC800603	100	5.5	968	12	72	3	400	65 / 61	200	IP55

Drawings and Dimensions



Wiring Diagrams



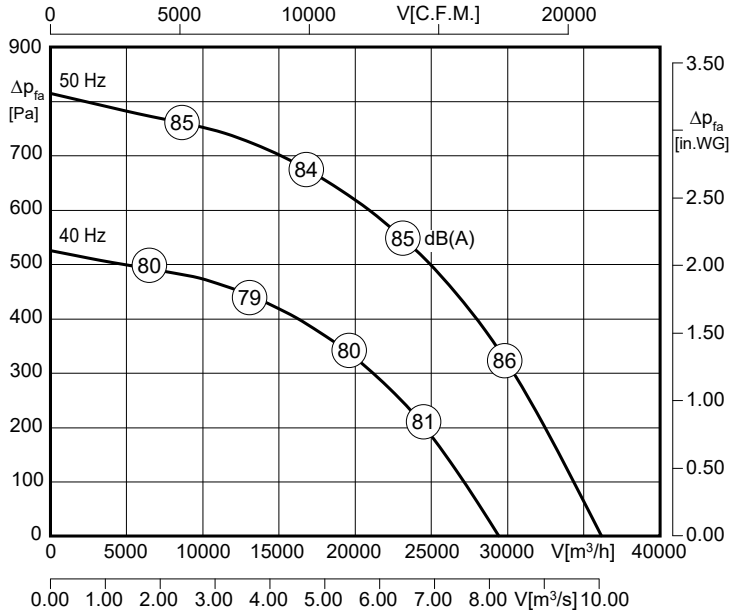
Inverter details

Part Number	Description
EA901021	IDDXF54 12.0



*Inverter drive included and fitted as standard

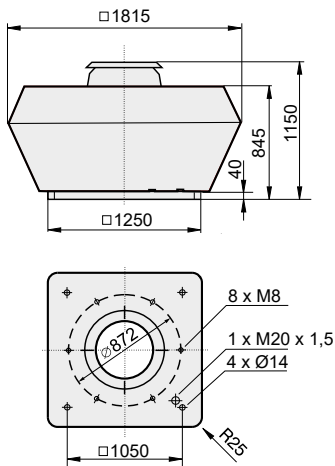
Performance chart



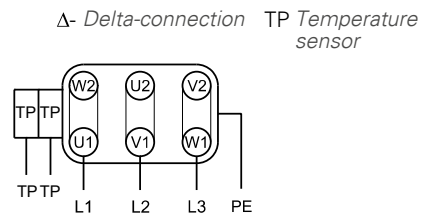
Product & Electrical details

Fan Description	Part Number	Temperature (°C)	kW	Speed (rpm)	FLC (A)	SC (A)	Phase	Voltage	Breakout Sound Level dB(A) @ 3m	Fan Weight (Kg)	IP Class
eVertical DVC 900/6/3	RC900665	100	7.5	970	15.8	105	3	400	Inlet / Outlet 71 / 63	310	IP54

Drawings and Dimensions



Wiring Diagrams



Inverter details

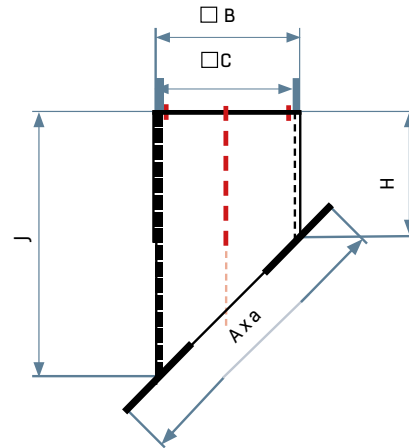
Part Number	Description
EA901021	IDDXF54 12.0



*Inverter drive included and fitted as standard

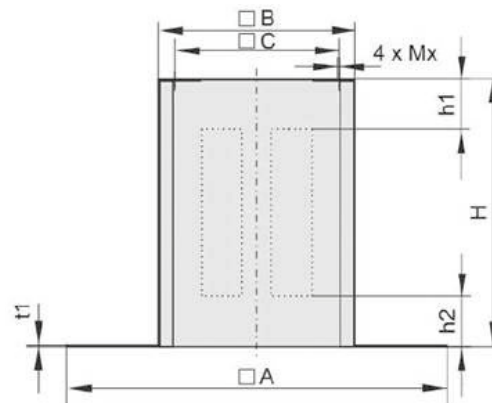
ACCESSORIES

Base for Sloping Roof (5-45°)



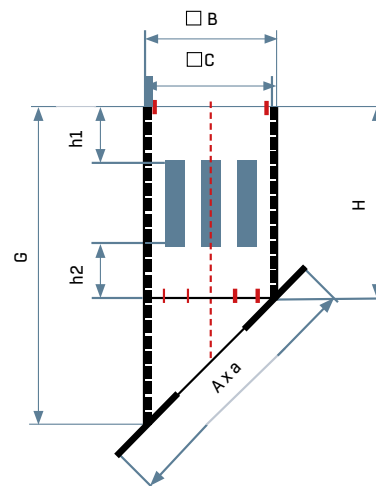
Size	Part Number	A (mm)	a (mm)	B (mm)	C (mm)	H (mm)	J(mm)	Weight (Kg)
355/400	FS035550	X	817	555	450	300	X	6.5-8.5
450/500	FS045050	X	877	625	535	300	X	7.0-10.0
560/630	FS056050	X	1200	895	750	300	X	10.0-13.0
700	FS071050	X	1300	985	840	300	X	12.0-15.0
800/900	FS080050	X	1490	1205	1050	300	X	15.0-18.0

Sound attenuator for flat roof



Size	Part Number	A (mm)	B (mm)	C (mm)	H (mm)	Mx (mm)	t1 (mm)	h1 (mm)	h2 (mm)	Weight (Kg)
355/400	SD035521	874	555	450	900	M10	2	250	200	24
450/500	SD045021	900	625	535	900	M10	2	270	250	26
560/630	SD056021	1200	895	750	1070	M10	2	320	320	39
700	SD071018	1300	985	840	1160	M10	2	300	360	46
800/900	SD080000	1740	1205	1050	1230	M12	4	405	125	154

Sound attenuator for SLOPING ROOF (5-45°)



Size	Part Number	A (mm)	B (mm)	C (mm)	H (mm)	Mx (mm)	t1 (mm)	h1 (mm)	h2 (mm)	Weight (Kg)
355/400	SD035550	X	874	555	450	900	X	250	200	33-36
450/500	SD045050	X	900	625	535	900	X	270	250	37-40
560/630	SD056050	X	1200	895	750	1070	X	320	320	52-56
700	SD071050	X	1300	985	840	1160	X	300	360	72-77
800/900	SD080050	X	1740	1205	1050	1230	X	405	125	180-195

AIRTREND Ltd. - KOVENT D.O.O.
 Kumanovska 14
 11000 Beograd
 Tel. 011 383 68 86, 308 57 40
 Faks 011 344 41 13
 E-mail: gobrid@eunet.rs, office@kovent.rs
www.airtrend.rs, www.kovent.rs